

# Talon Journey Time Analysis (JTA) and Average Speed (AS)

The Talon Journey Time Analysis (JTA) and Average Speed (AS) software is used with the Talon ANPR engine to provide real time travel and speed information on vehicles travelling along open roads and highways and through urban and city centre areas.

The system works by using two or more cameras set up at each end of a road 'segment' or outstations. At each outstation the plate recogniser unit (running Talon ANPR software) and camera collects plate reads from passing traffic. This information is then sent to a 'centre' for processing. As a vehicle is matched at the end of a road segment or outstation, the individual journey time of that vehicle is calculated. The package is extremely flexible and can be customised to meet many traffic management issues. The system allows easy management of a large multi lane system through its flexible user interface menus, a selection of which are shown below.

## AVERAGE SPEED MEASUREMENT

When using the system in an average speed over distance application the system calculates the speed of the vehicle using the standard journey time formula. This speed is derived from knowing the journey time over a known distance. The actual speed can be measured against a user definable speed limit set within the system, if a violation occurs the system can generate an alarm, store the information and display a warning to the driver that they have exceeded the speed limit.

## KEY FEATURES

**Modular Design** The application can be tailored to meet the customer's requirements.

**Scaleable System** The application can be expanded from a single point to point system to a full multi-lane solution.

**User Friendly Display** The design of the user interfaces allow easy management and administration of the system.

**Accurate Calculations** The journey time and average speed formulas provide accuracy to within 2% on a 2km leg.

**Vehicle Databases** The system can be configured to recognise specific vehicles stored in a hotlist and compare their activity against unknown vehicles e.g. Buses vs. others.

**Statistical Reports** Standard and user definable reporting package.

**Robust Performance** Will tolerate vehicles with poor quality licence plates.

**Variable Message Display** Interface to variable message signs for displaying vehicle speed or traffic information.

**Third Party Interfaces** Links to CCTV systems, OEM Databases, Urban Traffic Systems, Police systems, GPS and atomic clocks.

**Imaging Option** Associated image files can be captured and stored with a number plate read.

## APPLICATIONS

- Road usage calculation
- Traffic flow analysis
- Incident detection
- Driver speed warning
- Journey time analysis
- Crime reduction

### Appian Technology Plc

Appian House, Wessex Road,  
Bourne End, Buckinghamshire,  
SL8 5DT. United Kingdom

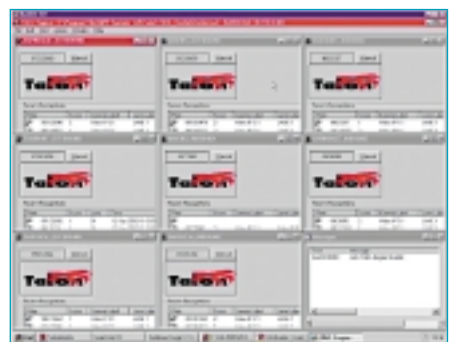
Tel: +44 (0) 1628 554 750

Fax: +44 (0) 1628 554 751

Web: [www.appian-tech.com](http://www.appian-tech.com)

Email: [sales@appian-tech.com](mailto:sales@appian-tech.com)

# TALON<sup>SP</sup>



For More information on this product please contact our sales team direct.

Tel: +44 (0) 1628 554750

E-mail: [sales@appian-tech.com](mailto:sales@appian-tech.com)

Web: [www.appian-tech.com](http://www.appian-tech.com)

**APPIAN**  
TECHNOLOGY PLC